

ReTain® PGR Maintains Post-Harvest Fruit Quality

ReTain® Plant Growth Regulator Soluble Powder contains AVG, which temporarily inhibits the production of ethylene and slows the fruit maturation process to minimize fruit drop and maximizes marketable yield. In addition to traditional harvest management benefits, *ReTain* also maintains post-harvest fruit quality and reduces disorders in storage for improved packout and marketability.

Pre-Harvest Benefits:

- ▶ Drop control
- ▶ Extends the harvest window and provides more flexible labor management
- ▶ Maintains fruit firmness
- ▶ Reduces cracking, watercore, skin greasiness and bleeding

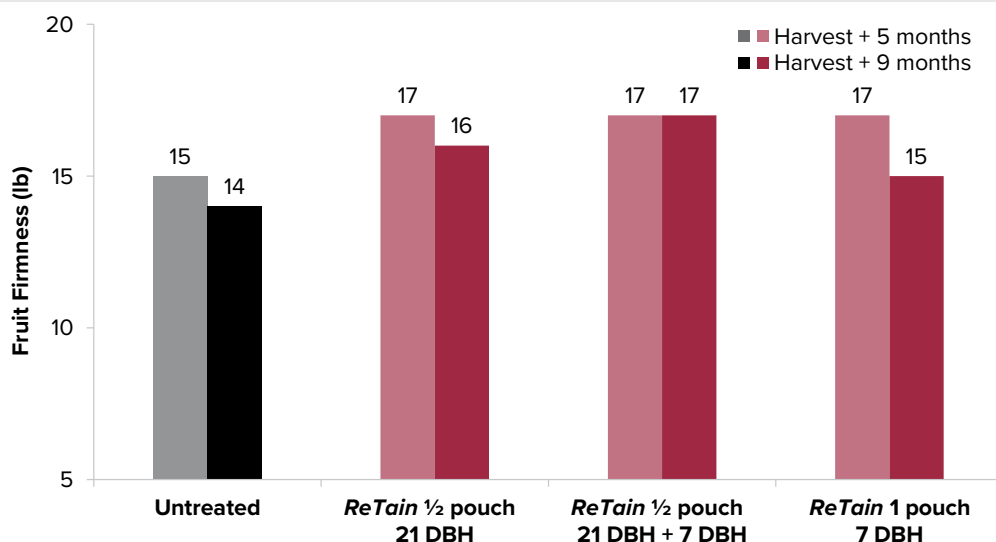
Post-Harvest Benefits:

- ▶ Reduces stem-end flesh browning
- ▶ Maintains fruit firmness
- ▶ Reduces skin greasiness and waxiness
- ▶ Improves packout

ReTain Preserves Fruit Firmness

ReTain maintains the fruit firmness at harvest during long-term storage. *ReTain* was most effective when used 21 days before harvest and again 7 days before harvest.

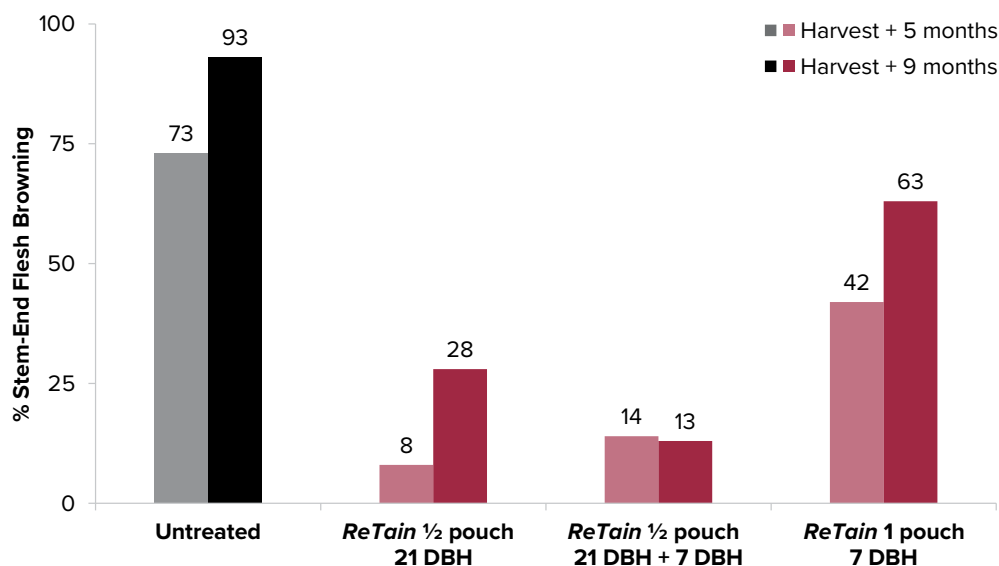
Apple variety = Gala
DBH = Days Before Harvest
Source: C. Watkins, Cornell, Ithaca, NY



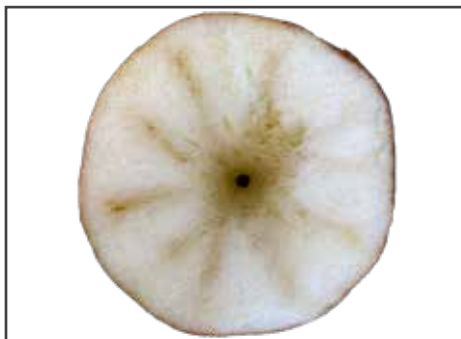
ReTain Reduces Stem-End Flesh Browning

ReTain reduces stem-end flesh browning while in long-term CA (Controlled Atmosphere) storage. *ReTain* was especially effective when used at the 21-day mark and again 7 days before harvest.

Apple variety = Gala
DBH = Days Before Harvest
Source: C. Watkins, Cornell, Ithaca, NY



ReTain Reduces Stem-End Flesh Browning, Stem Bowl Cracking, Watercore and More Disorders



Stem-End Flesh Browning



Stem Bowl Cracking



Watercore

How To Use

Rate	1–2 pouches/A in a single application or split applications <ul style="list-style-type: none"> • Packaging: water soluble pouch (50 grams AI/333 grams water soluble bag)
Application Timing	To maximize benefits to reduce stem-end flesh browning and maintaining fruit firmness during storage: <ul style="list-style-type: none"> • ½ a pouch 21 days before harvest followed by ½ a pouch 7 days before harvest (equals a full rate split for maximum quality benefit)
Method	<ul style="list-style-type: none"> • Water volume: 100 gal/A or enough volume for adequate coverage without excessive runoff • Apply to healthy orchards. Do not apply to trees that may be nutrient, drought or pest stressed.
Surfactant	<ul style="list-style-type: none"> • For optimal response, use an organosilicone surfactant at a concentration of 0.05–0.1% (v/v) to improve uptake • The use of an organosilicone surfactant is especially critical for drop-prone varieties
PHI / REI	7 days / 12 hours

ReTain Use Considerations and Best Practices

- ▶ Avoid anything that contains zinc, iron or copper, as well as any +3 cations
- ▶ Apply under slow drying conditions and cool fruit temperatures (early morning, late evening)
- ▶ Maintain solution pH between 6 and 8
- ▶ Do not apply if rain is expected within 8 hours of application
- ▶ Do not tank mix *ReTain* with sunburn products. If sunburn products are used, apply at least 3 days before or after *ReTain* application.



Products That Work, From People Who Care[®] | valent.com | 800-6-VALENT (682-5368)

Always read and follow label instructions.

Products That Work, From People Who Care is a registered trademark of Valent U.S.A. LLC. *ReTain* is a registered trademark of Valent BioSciences LLC. ©2024 Valent U.S.A. LLC. All rights reserved. Printed in the U.S.A. 2024-RET-8014 6/24



LEARN MORE