

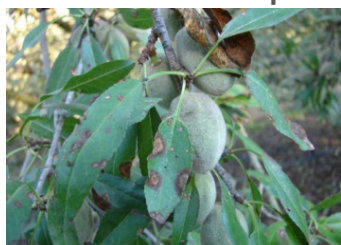
Power Almond Yields with Quash[®] Fungicide Disease Control

Quash[®] Fungicide is a highly effective foundation fungicide that **delivers proven, broad spectrum performance for a planned rotation program.**

- ▶ Broad spectrum performance
 - Highly effective on Alternaria, rust, scab and more
- ▶ Preventive protection for when diseases strike
- ▶ Helps deliver on optimal yields and crop quality

Disease Control Ratings

Alternaria Leaf Spot



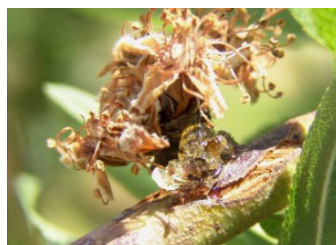
★★★★★

Rust



★★★★★

Brown Rot



★★★★★

Scab



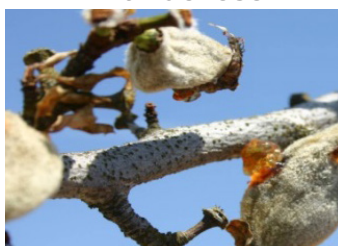
★★★★

Shot Hole



★★★★

Anthrachnose



★★★★★

Powdery Mildew



★★★★

Hull Rot



★★★★

Efficacy ratings are from the UC 2022 Efficacy and Treatment Timing of Fungicides for Deciduous Tree Fruit and Nut, Citrus, Strawberry and Vine Crops in California. ★★★★★ = excellent and consistent ★★★★ = good and reliable

How To Use

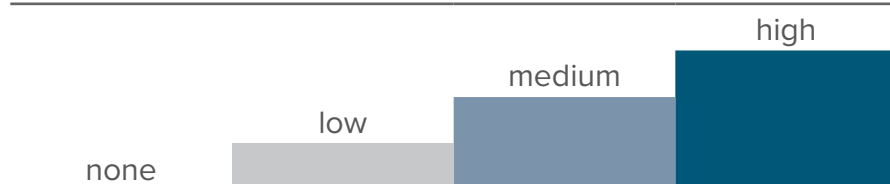
Rate	<ul style="list-style-type: none"> Apply 2.5 oz/A for shot hole, 3.5 oz/A for rust, powdery mildew and anthracnose, 2.5–3.5 oz/A for Alternaria leaf spot, brown rot/blossom blight, scab and hull rot Maximum of 2 sequential applications and no more than 4 applications per year
Timing	Bloom, post bloom and summer spray schedule depending on disease (see use timing chart on reverse side)
Method	Foliar spray (100–400 GPA by ground, 10 GPA by air)
Rainfast	2 hours
REI / PHI	12 hours / 25 days

Other Important Information

- ▶ Signal word: Caution
- ▶ *Quash* is not hazardous to arthropods, including honeybees
- ▶ FRAC Group 3 Fungicide

Use Timing

Legend: Effectiveness of Treatment Timing



Note: the higher the bar, the more effective *Quash* is at controlling that particular disease at that particular time



	Bloom			Post Petal Fall		Summer		
Disease	Pink Bud	Full Bloom	Petal Fall	2 Weeks	5 Weeks	May	June	July
Alternaria Leaf Spot								
Anthracnose								
Brown Rot								
Scab						*See note		
Shot Hole								
Rust								
Hull Rot (Suppression)							Monilinia	Rhizopus

*Dormant application of chlorothalonil + oil to reduce scab inoculum in the spring may delay onset of epidemic and synchronize scab with *Alternaria* treatments. Disease Management Update and Optimum Fungicide Usage Based on Host Phenology and Disease Monitoring, Dr. J. E. Adaskaveg, Department of Plant Pathology, University of California, Riverside, December 2014 Almond Conference Pest Management Update. Scouting and monitoring orchards is the only way to be completely sure that the timing is correct (regardless of dormant spray).



Products That Work, From People Who Care[®] | valent.com | 800-6-VALENT (682-5368)

Always read and follow label instructions.

Quash and *Products That Work, From People Who Care* are registered trademarks of Valent U.S.A. LLC. ©2023 Valent U.S.A. LLC. All rights reserved.
Printed in the U.S.A. 2023-QUA-8004 6/23