



TECHNICAL INFORMATION BULLETIN

OVERVIEW

Maverick® Corn Herbicide is a low use rate, three-way premix of proven actives (clopyralid, mesotrione and pyroxasulfone), that provides broad spectrum preemergence weed control that can be applied preplant incorporated, preemergence, postemergence or sequential-split application.

Maverick also has postemergence activity that is optimized when used with glyphosate. *Maverick* contains three modes of action for resistance management. The addition of atrazine will provide an additional mode of action and increase control of problematic weed species in preemergence and postemergence applications.



TECHNICAL FEATURES

- ▶ Use rate of 14 to 32 fl oz/A
 - Preplant incorporated/preemergence: 18–32 fl oz/A (rate dependent on soil type)
 - Postemergence: 14 fl oz/A
- ▶ Three modes of action for broad spectrum control
- ▶ Atrazine compatible
- ▶ Flexible application timing:
 - Preplant incorporated
 - Preemergence
 - Postemergence (up to 18-inch corn or V6, whichever occurs first)
 - Sequential application (fine soils only): 14–18 fl oz preemergence followed by 14 fl oz postemergence up to 18-inch corn or V6, whichever occurs first

MODES OF ACTION AND HRAC GROUP

Clopyralid	Plant-Growth Inhibitors–Group 4
Mesotrione	HPPD Inhibitors–Group 27
Pyroxasulfone	Very-Long-Chain Fatty Acid (VLCFA) Inhibitors–Group 15

LABELED CROPS AND TARGET WEEDS

Weeds controlled/suppressed by preemergence application of *Maverick* in field corn, seed corn, silage corn and yellow popcorn (not all target weeds are listed).

Grasses and Sedges		
Barnyardgrass	Goosegrass	Rice, red
Crabgrass species	Johnsongrass, seedling*	Sandbur, field*
Cupgrass, woolly*	Millet, foxtail	Shattercane*
Foxtail, bristly	Millet, wild proso*	Signalgrass, broadleaf**
Foxtail, giant	Nutsedge, yellow	Wheat, volunteer***
Foxtail, green	Oat, wild***	Witchgrass
Foxtail, robust (purple, white)	Panicum, fall	
Foxtail, yellow	Panicum, Texas*	

LABELED CROPS AND TARGET WEEDS continued

Weeds controlled/suppressed by preemergence application of *Maverick* in field corn, seed corn, silage corn and yellow popcorn (not all target weeds are listed).

Broadleaves		
Amaranth, Palmer**	Fleabane, hairy	Pigweed, redroot
Amaranth, Powell	Henbit	Pigweed, smooth
Amaranth, spiny	Horseweed (marestail)	Pigweed, tumble
Bedstraw, catchweed***	Jimsonweed	Puncturevine**
Beggarweed, Florida	Kochia**	Purslane, common
Buckwheat, wild**	Lambsquarters, common	Radish, wild
Buffalobur	Lettuce, prickly	Ragweed, common
Burclover, California	Mallow, Venice	Ragweed, giant**
Carpetweed	Morningglory, entireleaf**	Sesbania, hemp
Carrot, wild	Morningglory, ivyleaf**	Shepherd's-purse
Chickweed, common	Morningglory, pitted**	Sicklepod**
Chickweed, mouseear	Morningglory, tall**	Sida, prickly***
Clover, red	Mustard, wild	Smartweed, Pennsylvania
Cocklebur, common**	Nightshade, black	Sunflower, common**
Dandelion, common (seedling)	Nightshade, eastern black	Swinecress
Deadnettle, purple	Nightshade, hairy	Velvetleaf
Eveningprimrose, cutleaf	Pansy	Waterhemp, common/tall**

*Partial control.

**For early preplant applications and reduced tillage (i.e. no-till/high residue) systems use the higher labeled rate. See label for complete list of weeds controlled by preemergence application. Can be used as part of an early postemergence application with glyphosate. See label for weeds claimed.

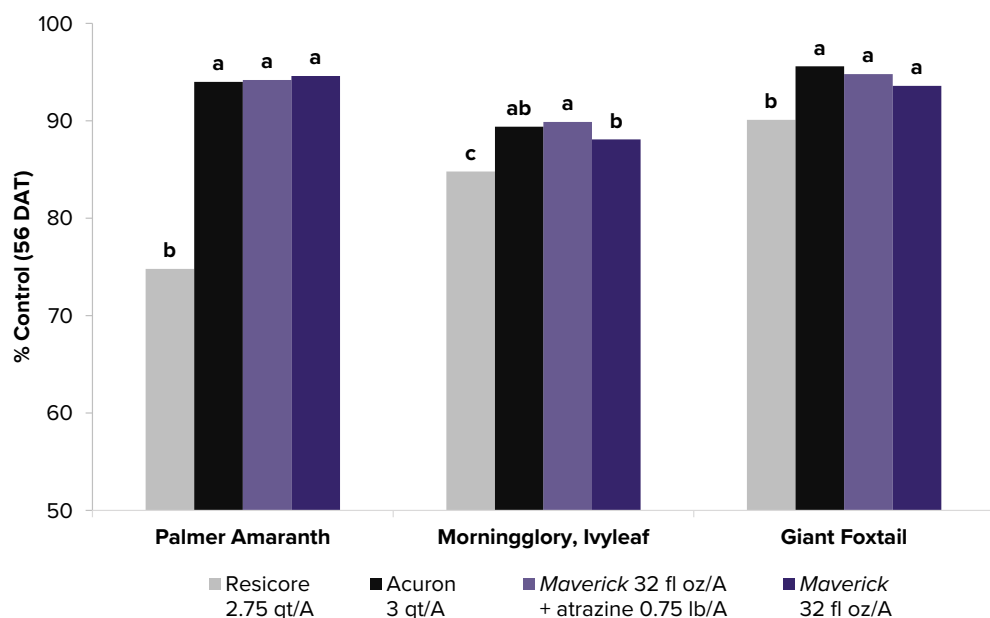
PERFORMANCE

Broadleaf and Grass Weed Control

Maverick provides greater control compared to Resicore®. *Maverick* + atrazine and *Maverick* provide equal control compared to Acuron®.

Means followed by the same letters are not significantly different ($P \leq 0.10$).

Source: 14 university and internal trials



PERFORMANCE—PREEMERGENCE WEED CONTROL

Maverick provides equal to or greater control compared to Resicore at 1X use rate; *Maverick* + atrazine provides equal control compared to Acuron at 1X.

Weed	Acuron 3 qt/A	TripleFLEX® II 3 pt/A	Resicore 2.75 qt/A	<i>Maverick</i> 32 fl oz/A	<i>Maverick</i> 32 fl oz/A + atrazine 1 lb/A
	% Control				
Amaranth, Palmer	97	76	77	98	97
Barnyardgrass, common	92	40	65	82	77
Crabgrass, large	100	87	98	100	93
Foxtail, giant	97	78	89	93	93
Kochia	99	73	95	94	100
Lambsquarters, common	100	98	99	98	100
Morningglory sp.	83	17	96	86	98
Panicum, fall	N/A	96	91	96	99
Purslane, common	91	99	92	98	97
Ragweed, common	100	98	100	100	100
Sida, prickly	98	98	97	100	98
Signalgrass, broadleaf	93	22	85	91	90
Velvetleaf	99	86	97	96	99
Waterhemp, common/tall	100	99	100	100	100

Source: Valent

PERFORMANCE—PREEMERGENCE WEED CONTROL



Untreated



Acuron 3 qt/A



***Maverick* 32 fl oz/A
+ atrazine 0.75 lb/A**

Maverick + atrazine provides equal control compared to Acuron.

Maverick applied prior to corn emergence. Photos were taken 42 days after application.

Location: York, NE.

Source: Valent

FORMULATION

Maverick is a suspension concentrate (SC) that contains 0.829 pounds mesotrione, 0.693 pounds clopyralid MEA salt (0.525 pounds acid equivalent) and 0.693 pounds pyroxasulfone per gallon.

IDENTITY, PHYSICAL AND CHEMICAL PROPERTIES

Common and Chemical Names:

Clopyralid: 3,6-dichloropyridine-2-carboxylic acid, monoethanolamine salt

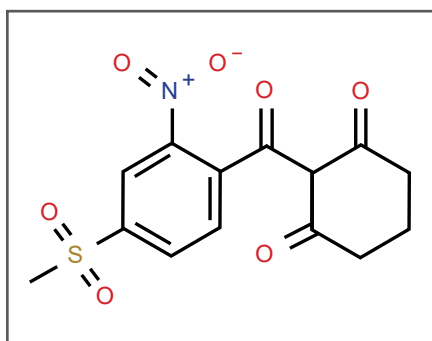
Mesotrione: 2-[4-(methylsulfonyl)-2-nitrobenzoyl]cyclohexane-1,3-dione

Pyroxasulfone: [5-(difluoromethoxy)-1-methyl-3-(trifluoromethyl)-1H-pyrazol-4-yl]methyl 4,5-dihydro-5,5-dimethylisoxazole -3-yl sulfone

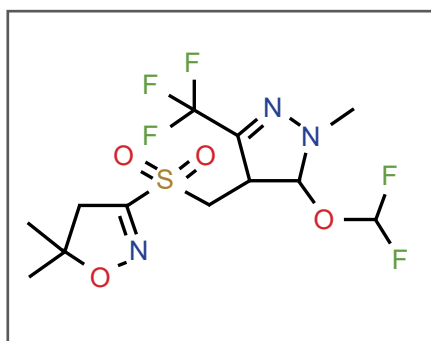
Density: 9.3 pounds per gallon

Resistance Status: Three modes of action; no known species have resistance to all three in North America

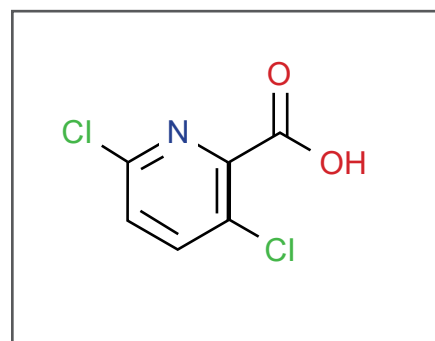
Chemical Structures:



Mesotrione



Pyroxasulfone



Clopyralid

TOXICITY

For Formulated Product:

Acute oral LD50 (rat): > 5,000 mg/kg body weight

Acute dermal LD50 (rat): > 5,000 mg/kg body weight

Acute inhalation LC50 (rat): > 2.19 mg/L air

Eye irritation (rabbit): mildly irritating

Skin irritation: (rabbit) slightly irritating

Skin sensitization: (mice) not a contact dermal sensitizer

Category IV

Category IV

Category IV

Category IV

Category IV

The information contained herein is, to our knowledge, true and accurate as of the published date of this bulletin. Valent U.S.A. LLC continues to gather additional information as to the efficacy, toxicology, protective procedures and equipment, etc., and the foregoing is inherently interim and incomplete.

THIS IS NOT A LABEL AND DOES NOT PROVIDE USE INFORMATION.

CONTACT A VALENT REPRESENTATIVE IF YOU NEED ADDITIONAL INFORMATION.



Products That Work, From People Who Care® | valent.com | 800-6-VALENT (682-5368)

Always read and follow label instructions.

Maverick and *Products That Work, From People Who Care* are registered trademarks of Valent U.S.A. LLC. Acuron is a registered trademark of a Syngenta Group Company. Resicore is a registered trademark of Corteva Agriscience and its affiliated companies. TripleFLEX is a registered trademark of Bayer Group. ©2024 Valent U.S.A. LLC. All rights reserved. Printed in the U.S.A. 2024-MVK-2000 1/24



LEARN MORE