

| Soybeans |

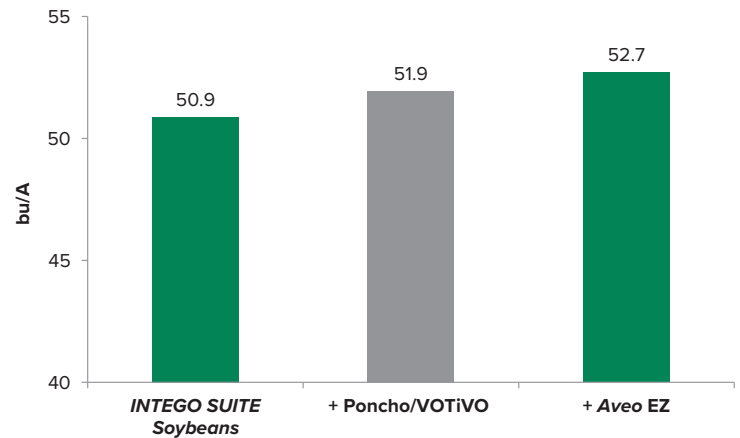
## A Combination Defense for Powerful Soybean Protection

Add Aveo® EZ Nematicide to INTEGO® SUITE Soybeans for powerful protection against Pythium, Phytophthora and soybean cyst nematode (SCN). The dual modes of action in *INTEGO SUITE Soybeans* creates a complete zone of protection against a wide spectrum of Pythium species, while long-lasting ethaboxam protects the seedling from Phytophthora. The highly concentrated formulation of Aveo EZ provides consistent performance against SCN with a low use rate. When added to the superior protection of *INTEGO SUITE Soybeans*, a retailer can offer a complete package that is easy on their operation.

### Aveo EZ—Consistent Performance

Concentration Advantage	Labeled Use Rate
Poncho®/VOTIVO® 2 x 10 <sup>9</sup> cfu/ml	0.13 mg AI/seed (1 fl oz/140,000 seeds)
Aveo EZ 6.1 x 10 <sup>10</sup> cfu/ml	0.1 fl oz/140,000 seeds
Clariva® 1.0 x 10 <sup>10</sup> spores/ml	1–3 fl oz/100 lbs seeds (0.5–1.5 fl oz/140,000 seeds)

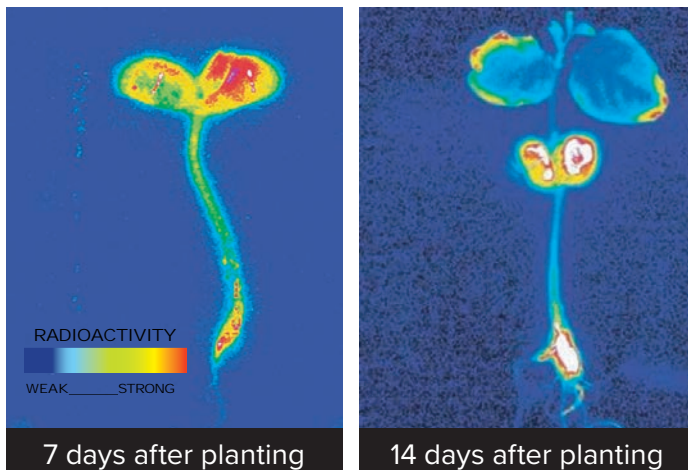
Highly concentrated formulation containing more colony forming units (cfu) per ml than the competition.



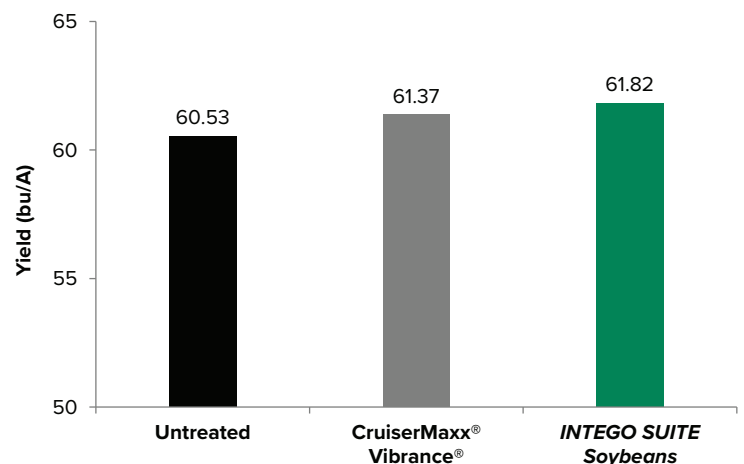
In known SCN environments, Aveo EZ provided a 1.8-bushel yield increase.

Trials in the following states: AL (3), IA (2), IL (2), MI (2), MN, MS, NE (4), OH (2).

### INTEGO SUITE Soybeans—Protects Plant From Disease, Increases Yield



Radiolabeled metalaxyl and ethaboxam show fast-acting and long-lasting protection from Pythium and Phytophthora.

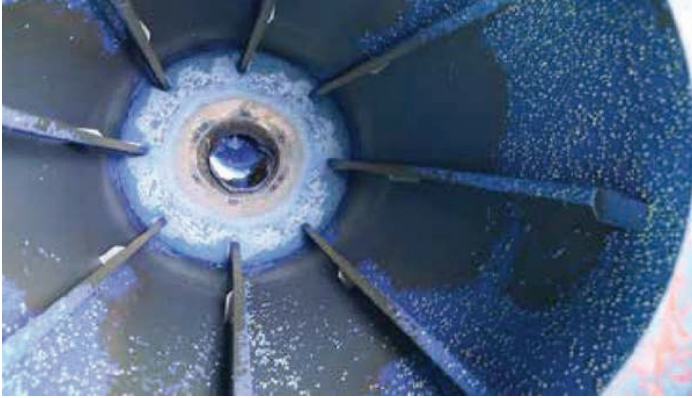


In 82 non-inoculated research trials conducted over four years, *INTEGO SUITE Soybeans* increased yields over CruiserMaxx Vibrance by 0.45 bushels.

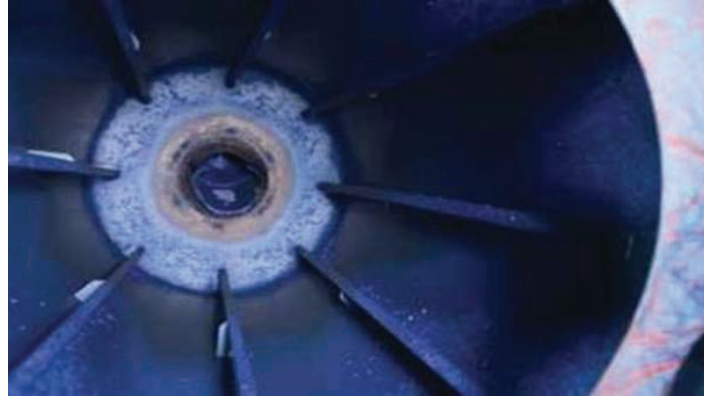
Trials in the following states: AR, IA (13), IL (14), IN (11), MI (2), MO (2), MN (4), MS, ND (2), NE (7), OH (9), SD (10), WI (6).

## INTEGO SUITE Soybeans

User-friendly treatment. Smooth flowability in the treatment chamber.



CruiserMaxx® Plus chamber



INTEGO SUITE Soybeans chamber

### How To Use—Aveo EZ

<b>Rate</b>	0.1 fl oz/140,000 seeds
<b>SKU Size</b>	25-oz bottle, 4 x 25-oz case (treats 1,000 units)
<b>Product Designations + Regulations</b>	Treated seed must be labeled with a seed bag tag

### How To Use—INTEGO SUITE Soybeans

<b>Rate Range</b>	INTEGO SUITE Soybeans contains the following: clothianidin, ethaboxam, ipconazole, metalaxyl Use rate: 3.37 fl oz/cwt
<b>SKU Size</b>	15-gallon drum (treats 1,100 units, 50 lb)
<b>Product Designation + Regulations</b>	Treated seed must be labeled with a seed bag tag. Do not use a foliar spray containing clothianidin until 46 days after planting. Do not graze or feed soybean forage hay to livestock.



Looking for a fungicide only option? INTEGO® Fungicide Soybeans is now available for the same powerful disease protection of INTEGO SUITE Soybeans, without the insecticide component.

**Aveo EZ and INTEGO SUITE Soybeans are not registered for use on soybeans in California.**



Products That Work, From People Who Care® | [valent.com](http://valent.com) | 800-6-VALENT (682-5368)

**Always read and follow label instructions.**

Aveo, INTEGO and Products That Work, From People Who Care are registered trademarks of Valent U.S.A. LLC. Clariva, CruiserMaxx and Vibrance are registered trademarks of a Syngenta Group Company. Poncho and VOTIVO are registered trademarks of BASF. ©2023 Valent U.S.A. LLC. All rights reserved.  
Printed in the U.S.A. 2023-SOYSS-8000 9/23